

NEW MOMS



New possibilities. Bright futures. Thriving families.



2023 ANNUAL REPORT

SLACK (noun):

extra space, time, and resources that reduce stressors and allows for greater focus to work towards achieving goals.

Keep an eye out for the **orange highlights to learn more about how slack shows up in our work.*



“I love the encouragement my Coach gives me to strive towards my goals.”

- NEW MOMS PROGRAM PARTICIPANT

New Moms' vision is to see every young family thrive. So, what does it take to get there?

This year, we are celebrating **40 years of supporting families** towards this vision. Walking alongside young moms and their children with deep hope for their futures, listening to their stories, and understanding the challenging circumstances and systems they face has informed our work and how we live out our mission towards this audacious vision every day.

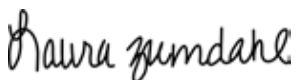
The reality is that **managing our lives is an immense responsibility!** Parenting, working, childcare, transportation, housing, bills, mental and physical health, relationships—no matter who you are, this can feel overwhelming. But when a family is experiencing the added stressors of poverty and homelessness, they have very limited bandwidth to focus on anything more than survival.

Amidst these challenges is where New Moms comes in. We offer a support system around each family, creating a little bit of slack in their lives so young moms can focus on those goals that will have the most significant impact on the future well-being of their family. **A passionate and caring team, programs intentionally designed** to be a catalyst for growth, and a **network of partners and supporters** throughout Chicagoland come together for this common vision to see families thrive.

I'm pleased to share this annual report with you. Within these pages, you'll learn about the **new mental health supports** we are adding to our services so families can readily access this critical resource. You'll read stories of young moms who are **accomplishing goals that will have lasting effects on the future of their families**, and about **powerful partnerships** we have formed to strengthen safety nets and create opportunities for families experiencing significant needs in our communities.

These stories are possible because you invest in this multigenerational work. Thank you for your conviction in the belief that young families should thrive. Your generosity makes a powerful difference.

With hope and gratitude,



Laura Zumdahl, Ph.D., LSW
PRESIDENT & CEO





BRINGING **Mental Health Supports** IN-HOUSE

THIS YEAR, NEW MOMS ADDED formal **mental health supports** to the services we offer young families. We have always been committed to connecting families to mental health resources, and for many years, we have been grateful to rely on external partnerships to meet the mental health needs of our families. However, the volume of requests for support could not be met, and the barriers to accessing external supports were deterring families from getting help.

Becoming an **approved Behavioral Health Clinic (BHC)** has allowed New Moms to accelerate our goal of increasing mental health supports, and deepening our healing-centered work. As a BHC, we can utilize Medicaid as a revenue stream to support this work. We now have a Director of Clinical Services and an in-house therapist. We plan to hire a second therapist in the coming year.

We know that adding formal mental health supports for young families is a critical next step, and an essential investment in ensuring all young families thrive. Therapists will focus on **mothers and children**—providing another resource to help families build resilience. **Having New Moms' therapists on-site creates slack for families by making therapy easier to access. This will help participants build rapport with therapists and help to destigmatize mental health supports.**



“I love this program! Thanks for everything you do for my health and mental outlook. It’s really helpful that I am around other mothers that are going through the same problems as me.”

- NEW MOMS PROGRAM PARTICIPANT

IN 2022, NEW MOMS FORMALLY LAUNCHED

our second social enterprise, **The Hub @ New Moms**, providing Executive Skills Training & Consulting to human services organizations. In fiscal year 2023, The Hub has had a national reach, presenting at conferences and partnering with human services organizations across the country. In all, over 2,070 practitioners have been trained on Executive Skills.



After our trainings, practitioners often report a **significant shift of mindset**. When they see that leveraging Executive Skills for goals works for everyone, they reflect on their own executive skill strengths and challenges, building empathy and understanding for those with whom they partner in their work. Behaviors that may seem to be negative could be expressions of strengths that are being prioritized when under stress.

One trainee provided this feedback, *“I really appreciate how the trainers guide us in reflecting on our own executive skills...we all (from clients to executives) have areas that may need more support, and that the goal is to work off of our strengths to succeed versus changing who we are.”*

The Executive Skills Coaching (ESC) approach is inherently strengths-based and is fundamental to the New Moms way of partnering with young moms. As young moms work to accomplish goals and leverage their skills that will lead to strong families, ESC helps them recognize their strengths and chart a path towards family and career goals.

SHIFTING Mindsets

CHICAGO-BASED PARTNERS:

- Chicago Commons
- Ladders of Opportunity at the Parent Engagement Institute
- BrightPoint (formerly Children’s Home & Aid)

PARTNERS ACROSS THE NATION:

- National Community Action Partnership and local affiliates
- REDF and its many grantees, including Crossroads Campus Nashville
- Parents as Teachers
- The RISE Program, convened by The William G. McGowan Charitable Fund

“I will be thinking about how I can shift what I judge to be a problem, to considering ‘what is a strengths-based side to this?’”

- THE HUB TRAINEE

Learn more about Executive Skills Coaching at our **Executive Skills 101 webinar**.



WE KNOW THAT OBTAINING an Associate degree (or higher) leads to family-sustaining wage careers and economic stability.

In 2022, New Moms launched our **College Success program**. This 3-year pilot addresses a significant accomplishment gap in Illinois and across the nation. In Illinois, only 8% of single mother students complete an Associate degree within 6 years. Additionally, one in three black women in college—who are already underrepresented in higher education due to systemic barriers—are single parents.

25 young moms in our College Success program are enrolled in degree programs at local colleges. **They receive \$500 monthly stipends and engage with coaches and a peer group designed to provide education and create social capital.** The University of Chicago's Chapin Hall is providing formal evaluation of this pilot to help determine its impact.

Nearly 2 years into our pilot, one critical learning of this program is that **student parents greatly benefit from having an advocate coach**. Student parents manage a complex web of responsibilities. Most have limited bandwidth to navigate academic systems, which are often difficult to understand. In our program, a New Moms coach joins student parents in their academic advisor meetings as an advocate. This has proven to be highly effective in helping student parents to avoid challenges that could otherwise derail their progress.

89% of young moms graduated or persisted into Year 3 of our College Success program. 8 student parents are on track to complete Associate degrees this year; and 6 are on track to graduate next year.



“What’s really helpful is that it’s not just me listening to me, it’s someone who wants to help me. I like that I get help, advice, and guidance. My coach and I will talk, we’ll set goals...then she’ll check in with me. I sent her my grades and we track progress about how I’m doing at school.”

- CURRENT STUDENT PARENT



bright endeavors



BRIGHT ENDEAVORS MOVED to a new location in East Garfield Park in August 2022, marking the beginning of a new chapter for New Moms' job training social enterprise. The new location offers a stronger infrastructure for production and shipping, setting the social enterprise up for significant growth.

WE ARE EXCITED FOR NEW...

Products

We launched a new line of **soaking salts** to complement your favorite Bright Endeavors candle and complete your self-care routine.



We redesigned a customer favorite, the **Mini Glass candle from the Bright Lights Collection**. This candle now offers a reusable glass vessel that can become your favorite drinking glass, and a longer burn time with more renewable soy wax!

Our product experts are developing the most beautiful, high-quality products to unveil over the next year—so stay tuned!

Partnerships

Bright Endeavors was 1 of 10 vendors selected nationwide to participate in **Whole Foods' LEAP: On The Verge** cohort. This program infused knowledge about Whole Foods Market systems and built valuable connections with their team for continued growth in their stores. Bright Endeavors' products are sold at Whole Foods stores across the Midwest.



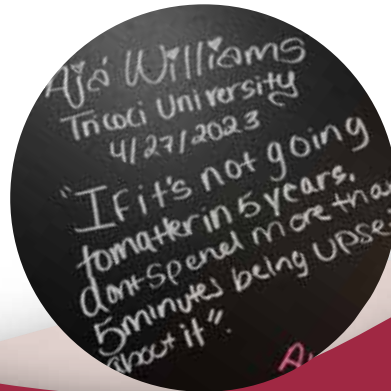
Beachwaver has chosen Bright Endeavors to produce their private label candles and reed diffusers.



We are ready to engage **bulk orders** for your organization's gifting needs! Visit **brightendeavors.org** to find out how you can gift Bright Endeavors to your network!

Career Pathways

Bright Endeavors exists to provide **paid job training** to young moms. The more products we sell, the more job training experiences we can provide. When young moms complete the program and move on to their next job, they sign the job wall in celebration of this significant step on their career path—our job wall is filling up!



A NEW CHAPTER

DOMINIQUE KNOWS HOW IMPORTANT IT IS

to have a community of support when life is overwhelming.

Before she found New Moms, she and her son had slept in cars and foreclosed apartments just to find safety and comfort for a night. Dominique says, *“I felt low, like I was failing my son and myself. I worked—but not as many hours as I needed to take care of my son.”*

For the last two years in **New Moms’ Housing program**, Dominique has worked closely with New Moms Coaches. *“What really impacted me in this program is Ms. Carolyn and Ms. Teneca. They treated me with respect and nurtured me into the young lady that I am becoming. When I thought I had no one in my corner, I always had them. I’m forever grateful for them.”*

These supportive relationships with her coaches provided **mental and emotional slack** so she could focus on achieving her goals. Dominique took steps to secure **stable housing**—her biggest and most immediate goal for her family. Housing Locator Carolyn worked with Dominique every step of the way to get placed in subsidized housing. She recently signed a lease to a townhome in the neighborhood where she grew up, just 30 minutes away from her grandmother!

Dominique accomplished her next major goal of **finding employment**. She now works at Potbelly Sandwiches, where she got a raise and was promoted to floor manager! Her smile says it all—she knows what it feels like to accomplish her goals.

Dominique is excited about *“having a home and just appreciating what we have right now. I’m excited for my son to have sleepovers, and little play dates together with his friends. I’m excited I get to cook dinner and breakfast for my son, not worrying about if we have to move or if we are being a burden to anyone.”*

Reflecting on how much she has grown since coming to New Moms, Dominique shares, *“I’m glad I overcame thinking I couldn’t give my son the life he needs. I’m now stronger than ever and I’ll never let that fear take over me again. Thank you New Moms!”*



“New Moms supported me mentally, physically, and emotionally. Without this program I don’t know what would have happened to us. It gave me a sense of security while trying to get my life together.”

– DOMINIQUE

Madison Neimer



*Right to left: Madison
and her mother, Joanne*

NEW MOMS

Family
Friend



NO ONE SHOULD PARENT ALONE.

That's why New Moms created the **Family Friends monthly giving program**. When you become a Family Friend, you provide **sustaining support to young moms and their children** so they know they are not alone on their journey towards thriving futures.

“Being a monthly donor to New Moms has been a priority to me because I understand the direct impact each dollar makes to the organization. By donating regularly to New Moms, moms in their programs are able to receive the resources, housing, and support they need to be the best moms they can be. Whether my few dollars go directly to the diaper closet, food pantry on site, or doula services, if it relieves one mom an ounce of stress, it’s worth it all.”

- MADISON NEIMER

DONOR SPOTLIGHT

Yuli, Alumni 2023

WHEN YOU TALK WITH YULI, she exudes joy and determination. She is a proud mother of two boys and is deeply motivated to lead her sons into a thriving future. When she joined the **New Moms Job Training program** and began working at Bright Endeavors, she embraced the experience to develop herself. Yuli stepped up to meet production goals set out before the team, engaged in support group discussions, and soon was promoted to team lead. When an opportunity arose to be featured in a story about New Moms for Mexican Mother's Day with Telemundo Chicago, Yuli welcomed the chance to try something new and practice her public speaking skills.

Yuli graduated from New Moms' Job Training program and got a job as a Pharmacy Technician. She emphasized that she **applies the transferable skills she learned working at Bright Endeavors** in her new job including counting, inventory, quality control, applying labels, measuring, and more! Way to go Yuli—you've got this!



Right to left:
Yuli and her
coach, Natisha

Eliza, Alumni 1995

RECONNECTING WITH ALUMNI

from **New Moms programs** is

always a joy.

During the pandemic,

Eliza

Melendez

called New Moms' offices

with a question

about a donation.

When asked how she

learned about New Moms,

Eliza said, *"New Moms saved my*

life!" **She was a young mom in**

our programs in 1995!



Left to right:
Eliza and her
daughter

While New Moms looked different back then, the heart of the work has remained the same. Eliza shares that New Moms *"spoke life into me."* The staff she encountered at New Moms back then told her, *"This does not define you. Just because you're a mom, a single mom, doesn't mean that you can't go on and do things!"* Today, Eliza is pursuing a Ph.D. and has joined New Moms' Board of Directors.



Hear Eliza tell her story by
[following this video link.](#)

"New Moms saved my life!"

- ELIZA MELENDEZ, NEW MOMS PARTICIPANT

Creating a Stronger SAFETY NET for Families

LIZ GONZALEZ, the Program Coordinator of **Lurie Children's Connect Home Visiting Chicago** (previously ConneCTeen), is grateful for their **partnership with New Moms**.

In 2019, Connect Home Visiting Chicago launched with a goal to help families, including pregnant and parenting youth, connect to programs that have service openings. New Moms has been a **core partner**, helping to shape the development and success of this critical initiative. As a home visiting service provider, New Moms values having a robust network of service providers who can work together to meet families' needs and ensure no family is left behind.

"Working with Liz and Lurie Children's has been such a positive partnership. Having that warm handoff from one trusted provider, Lurie Children's, to New Moms, allows for great beginnings for moms and babies, and ensures a continuum of care—no falling through the cracks," says Katie Wise, New Moms Director of Family Support Chicago.

This partnership establishes **coordinated care across community-based service providers**, creating a safety net—decreasing the gap between when a mom reaches out for support, and when she is connected to a service provider.

These coordinated efforts allow for more families to access support, and create slack across a network of providers who work diligently to meet the tremendous need existing in our communities.

A mom, hesitant to seek services, was encouraged by a social worker from Lurie Children's to connect with New Moms. Two years later, this mom is active in our Family Support program, attending groups and meeting weekly with her coach. She also engaged with a Doula as she prepared for the birth of her second child. With the support of New Moms' coaches, she found childcare and preschool for her oldest child. Her coach helped to identify a need for Early Intervention services, and provided a referral. Through the Lurie connection, this mom continued to stay on top of her children's check-ups with a pediatrician.



"New Moms is a wonderful program to recruit families to. They go above and beyond! The fact that there is housing onsite and they provide a guide for how to navigate the housing application system is a wonderful resource. The Workforce Development program is such a draw. There are so many great partners, but their comprehensive programs make New Moms unique."

- LIZ GONZALEZ,
LURIE CHILDREN'S
CONNECT HOME
VISITING CHICAGO



Chris (left) and Beth (right) Lye pictured with their daughter (center).

NEXT GENERATION SOCIETY

A Lasting Legacy

THE NEXT GENERATION SOCIETY provides an opportunity to **extend your impact** and **create a lasting legacy** through planned giving. By including New Moms in your estate plans, you can ensure that your values and commitment to young families continue to resonate for generations to come.

For **Beth and Chris**, the experience of poverty is very personal. Both struggled with poverty growing up and know what it's like to have no money and be seen as less than because of their economic status. Today, they are people of modest means, but planned giving has offered them a powerful way to support causes that are meaningful to them, like New Moms.

New Moms aligns with their hearts to **support people with the tools and relationships** they need as they climb out of poverty. They are drawn to New Moms as a faith-inspired organization that works to address issues of poverty and partner with families to help them accomplish their goals for their future.

Beth encourages everyone to remember charity in their estate plans regardless of their economic situation.

“The gifts you give through your estate plans are the biggest gifts you will make through your entire life. The accumulation of your life’s work will go somewhere—you want to be in the position to make the decision of who you are going to bless as a result of your life’s work.”

Naming New Moms as a beneficiary in your estate is a simple and powerful way to leave a legacy gift that will have a multigenerational impact. When you do this by **June 30, 2024**, you will be named an inaugural member of our **Next Generation Society**.

If you plan to, or have already made a legacy gift to New Moms, please let us know by emailing **Jenna Hammond** at jhammond@newmoms.org so that we can personally thank you.





309

MOMS
SERVED

386

CHILDREN
SERVED

695

TOTAL MOMS
& CHILDREN
SERVED

HOUSING STABILITY



77%

of young moms
exited New Moms to
stable housing

(Surpassing the national
benchmark of 64%)

68%

of young moms retained
stable housing for 12+
months after exit

(Exceeding the national
benchmark of 60%)

40,212

nights of shelter
provided to
74 families.

(74 young moms and
their 98 children).

ECONOMIC MOBILITY



87

young moms
obtained permanent
employment

74%

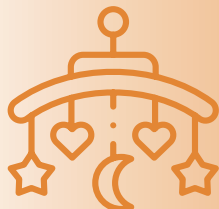
participants retained
unsubsidized
employment for 90 days

(Surpassing our goal of 70%)

73%

of participants
doubled their
income, entry
to exit

FAMILY WELL-BEING



82%

of those with a doula-
attended birth initiated
breastfeeding.

92%

of young moms in our
programs increased positive
parenting practices



Young moms set and achieved **70**
milestones* by working with coaches and
leveraging their Executive Skills strengths.

**Big, effortful, quarterly
goals such as getting
a job, securing an
apartment, or saving
for a car*

EMPLOYMENT PARTNER Taylor's Tacos



Left to right:
Taylor and Sydell

TAYLOR'S TACOS, located at 1512 Taylor Street, makes some of the most delicious tacos in Chicago. Taylor's love for bringing people together in the name of tacos led to this thriving business. In 2018, they launched out of The Hatchery, Chicago's west-side culinary incubator, and opened their first shop in May 2023!

Taylor heard of New Moms through a friend. She was drawn to the mission to see young women thrive and interested in becoming an employment partner. **In February, she hired Sydell, a graduate from New Moms' job training program. Sydell is on track to become a manager in December!**

As an **employment partner with New Moms**, Taylor has had **consistent support from our employment specialist** and trusts that our job training program is **preparing potential employees for the workforce**.

"[Sydell] comes from a program that is instilling these qualities into employees. We are excited to continue this relationship with New Moms and open up opportunities to others in the program. We want New Moms to send more resumes our way so we can be a **gateway for the women coming out of the program**. It's a great partnership!"

"From the beginning, Sydell had a keen attention to detail. She was trustworthy, punctual, able to work solo and on a team, and was a strong communicator! We are bringing her up as a manager because when she is around, she brings peace of mind—that's a priceless quality."

- TAYLOR



Sydell at Taylor's Tacos

HIGHLIGHTS

40th Anniversary Gala

THE NEW MOMS 40TH ANNIVERSARY GALA brought together 440 guests at the Bridgeport Art Center to support our mission and celebrate **four decades of multi-generational impact** in the lives of families in Chicagoland. The evening buzzed with energy as our community of supporters, both new and old, came together for the first time since the pandemic, all united by a shared commitment to support young moms and their children.

Highlights of the evening included **Job Training Production Assistants** demonstrating **Bright Endeavors** candle-making, a multi-media presentation sharing the **stories of New Moms families past and present**, and a surprise appearance by the **Downers Grove South Steppers!** Thanks to the generosity of our fabulous community, **close to \$400,000 was raised** during this magical celebration!



April 12, 2024

Mark your calendars for our next gala, once again at the Bridgeport Art Center.



Associate Board Hosts Glam Galentine's Party for Moms

THE NEW MOMS ASSOCIATE BOARD

rolled out the red carpet on Valentine's Day 2023, treating our moms in the Housing programs to an evening of pampering and self-care, a **"Galentine's Day" celebration**. The moms enjoyed a special night that included a catered dinner, childcare so moms could sit back and relax, and a menu of spa treatments including hair styling, manicures, refreshing facials, and makeup magic galore!

But the real magic happened when one mom was overheard exclaiming, "I feel so beautiful!" Tricoci University's evening beauty school class provided all these top-quality services, **thanks to an Associate Board member who arranged the connection.**



"I feel so beautiful!"

- GALENTINE'S CELEBRATION PARTICIPANT



Soon after this event, our **Employment Specialist** formed a partnership with **Tricoci University** to be a resource for young moms interested in a **Cosmetology** career, which has led to **one New Moms participant** joining their program!

HIGHLIGHTS

Volunteers Help Fulfill New Moms' Mission

VOLUNTEERS MAKE IT POSSIBLE for us to provide quality care and service to the moms and children in our programs.

Volunteers help create slack for our teams so they can keep their primary focus on supporting New Moms families. One group that epitomizes New Moms' values is Liferay, a digital software firm that provides Volunteer Time Off (VTO) to its employees. In Fiscal Year 2023, a Liferay team volunteered a total of twelve days at New Moms and Bright Endeavors! Their dedication provided much-needed assistance and added bandwidth for our teams when tasks piled up.

Volunteering at New Moms is often a **long-term commitment**. Consistency fosters trust and builds connections between moms, children, and volunteers. Whether it's participating in **Parent Support Group activities** or **welcoming guests at the Front Desk**, volunteers make mothers feel safe, comfortable, and supported.

Thank you to our volunteers for the love they show for our young families!



“New Moms’ recognition that a holistic approach combining family support, housing assistance, and hands-on workplace development can be life changing towards providing the baseline stability to allow young women to flourish. Those of us from Liferay located in Chicago are privileged to be able to work with New Moms as we come alongside to help families reach their full potential.”

– ISAAC WILSON, LIFERAY



This financial report is not only a report on the state of New Moms' financial status; it is also a **reflection of a community of generous funders** that includes individual donors, foundations, corporations, social enterprise customers, and local/state/federal government sources.

New Moms' mission moves forward because a **diverse network of people believe in the importance of investing in young moms**, so families can thrive and communities can flourish. For that, we are deeply grateful!

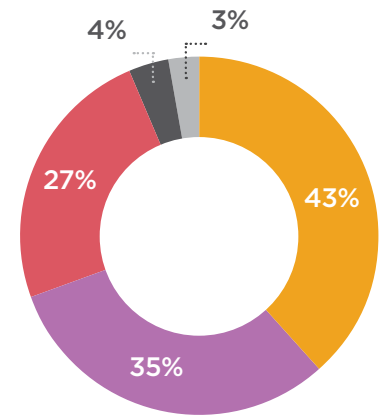
Revenue

FY23 (JULY 1-JUNE 30)

Contributions & Foundations	\$3,597,329
Government Contracts & Grants	\$3,075,676
Program Revenue (Bright Endeavors & Housing LLCs)	\$1,220,418
Debt Forgiveness	\$310,827
Other Income	\$174,736
TOTAL REVENUE	\$8,378,986

Expenses

Personnel	\$4,494,682
Operations	\$983,429
Facilities	\$494,963
Cost of Goods for Bright Endeavors	\$375,897
Participant Expenses	\$542,338
Housing LLCs	\$595,128
Depreciation and Amortization (+loan forgiveness)	\$531,726
Other	\$21,913
TOTAL EXPENSES	\$8,040,076
EXCESS OR DEFICIENCY OF REVENUE OVER EXPENSES	\$338,910



Expenses by Program

- Job Training
- Family Support
- Housing
- Administration
- Fundraising

FINANCIALS

Surplus includes multi-year funding accrued in FY23 for future years' expenses.

CHAMPIONS of Strong Families

#EveryWoman Project	Rachel Amrani	Claudia and Leslie Baier	Stephanie Beck	Christopher Block
101.9 The Mix	Matthew Amyx	Laura and Michael Baig	Amy Beckwith	Deborah Blue
Ariane Abcarian	Doug and Sally Anderson	Lindsay Baish-Flynn	Beer Shop	Blue Plate Catering
Shakeel Abdul	Jake Anderson	Carol Baker and Mark Stein	Beggars Pizza	Bluegrass Community Foundation
Elisabeth and Allen Abinoja	Linda Anderson	Aaron Baker	Melanie and Michael Behling	Leander Blumenthal
Lisa Abinoja	Meaghan Anderson	Stephanie Bakula	Wayne and Pressoir Belance	Melissa Boduch
Abra Prentice Foundation	Patti Anderson	Jessamyn Balma	Leslie Bell	Andrew Boeckmann
Acme	Warren and Greta Anderson	Paula Banks	Michael Todd Bell	Tess and Hailey Boland
ActiveCampaign	Katherine Andorka	Tom Baran	Benjamin B. Green-Field Foundation	Michelle Boone
Jennifer and Nolan Adams	Andrew Family Foundation	Blair Barbour	Morgan Benson	Wells Borie
JF Adams	Judith Andringa	Theresa and Steve Barcy	Brooke Berbieri	Josie and Theodore Boswell
Jerry Adelmann	Ruth and Greg Anerino	Jacqueline Barlow	Thomas Beres	David and Philomena Boulanger
Nada Adu-Gyamfi	Ayo Anise	Deanna Barnes	Mary and Robert Berg	Daniel Bourgeois and AnnaMarie Stastny
Afriware Books, Co	Caitlin Annatoy	Michelle and Theodore Barnes	Lauren Bergquist	Richard and Louise Bourgeois
Sarah Agle	Annie's Resale for the World	Matt and Bridgett Baron	Max Berkelhammer	Anne Bowhay and Jeff Hanneman
Joaquin Aguilar	Annunziato Family Foundation	Susan Barratt	Felice Bernstein	Judy Bowman
Aileen S. Andrew Foundation	Applegate & Thorne-Thomsen, P.C.	Elisabeth Barrett	Barbara Best	Christine Boye
Danielle Albergo	Mary and Adam Arents	Robert and Margarita Bartels	Beth Interactive Inc	Mindy Brack
Carolyn Aler	Deborah Armstrong	Bartleby's Ice Cream Cakes	Betsy's Blankets	Mark and Sarah Bradley
Chandra Alexandre	Richard and Nancy Arnoldy	Elizabeth Bartolucci	Justin Bewley Lo	Madeline Brady and James Arogeti
Amy Allman	Jennifer Arnolie	Amanda and Matt Basil	Big Nose Botanicals, LLC	Alice Brady
Dorca Almanzar	Sarah-Jayne Ashenhurst	Baskin Family Foundation	Amit Bindra	Gabrielle Brady Pendley
Naihal Almoghrabi	Marcia and Rick Ashton	Catherine and Brian Basler	Jen Biodrowski	Elizabeth Braik
Sami Alperstein	Dwight Atchley	Dana, Tracie and Aubrey Bateman	Bitter Pops	Matt and Megan Bramson
Alternatives, Inc.	Srinivasa Atta	Kathy Baumgartner	James Bixby	Lindsay Brehm
Monica Alvarado de Olis and Sean Olis	Noelle Auberger	Patricia Bayer	London Black	Cathy and Mike Brennan
American Family Corporate	Austin Coming Together	Susan Beach	Chris Blackburn	
American Family Insurance	Avenue Foods	Tiffany Beamon	Beth and Mark Blackwell	
American Family Insurance Dream Foundation Inc.	Avondale Bowl	Sandra Beasley	Danielle Blazek	
	Meghan Babbe		Joanna Blazek	
			Mary Blew	
			Michael Blight	
			Deborah Bloch	

Colleen Brennan	Corey Bulluck	Emily Catton	Brandon and Sarah Clark	CORE Industrial Partners LLC
Sheila Brennan	Joanne and Jeff Burgess	Robert Acton	Nancy Clark	Catherine Cornell
Melissa Brenner	Susan Burke	Cboe Global Markets	Tamiko Clark	Cornerstone Center Foundation
Alyssa Brescia	Joseph Burns	Ceres Foundation	Kathleen Clarke	Kaity Cornish
James Brewer	Linda Busch	Mary Chamblee	Zada Clarke	Mary Lee Corrigan and Joseph Rogul
Brewpoint Coffee	Beth Busching	Ron Charles	Classic Cinemas	Susan Cortolillo
Bridgespan	Daniela Butler-Ludwig	Samantha Chatman	Deb Clause and James Korenich	Carrie and Matthew Cotter
Sharena Bridgmon	John Butos	Christina Chen	Ruth and Christopher Cleghorn	Nadine Cound
Bright Endeavors	Steve Byrd	Judith and David Cheney	Melissa Cliff	Court Theatre
Bright Horizons	Sara Byrne	Michelle Chenoweth	Maya Cloyd	Ann Courter and Norman Hirsch
Beth Brinley	Kathleen Caliento	Chicago Athletic Clubs	Tiffany Cobbins	Covenant Presbyterian Church
Gregory Bristol	Meghan Callaghan	Chicago Bears	Thomas Cole	Martin Cox
Bruce Broerman	Erin Callahan	Chicago Board of Trade Foundation	Collaboration for Early Childhood	Susan Cox
Broken Tart	Phineas Callahan	Chicago Chapter Coalition of Black Trade Unionists (CBTU)	Carrie Collins	Mary Craig
Karen Bromley	Joy Calloway	Chicago Church of Christ	Erin Collins	Valerie Craig
Amanda Brooks	Danielle Campbell	Chicago Community Trust	Roy and Michele Collins	Stephen and Amy Crilly
Barbara Brooks	Melanie and Matthew Campillo	Chicago Finance Exchange	Gia Colunga	Dianne Crouch
Deborah Brooks	Candycopia	Chicago Fire FC	Paul Comes	Kathleen and Rob Crowder
Amanda Brougham	Linda Cannell	Chicago Golf & Social Club	Community Church of Fish Creek	Crown Family Philanthropies
Amanda Brown	Emika Canty	Chicago History Museum	Community Mental Health Board of Oak Park Township	CRS Cares Foundation
Betty Brown	Capital Genealogy	Chicago Improv	Audrey and Michael Connelly	Dana Cruz
Catherine and Chris Brown	Chad Capps	Chicago White Sox	Consulting Audiology Associates, LLC; DBA The Hearing Place	Kenneth Cuculich
Cherise Brown	Nichole Capraro and Ray Stacy	Chicago Winery	Tyeisha Conwell	Jacqueline Cuellar
Christy and Matt Brown	Cara	Chicago Zoological Society	Erica Cook	Brittany Culver and Mike Chrisler
Deanna Brown	Rocio Cardenas	Brian Chiga	Jessica Cook	Peyton Cummings
Deneita Brown	Robert Cares	Jeanie Child	Trudy Cools	Cuore e Mani Foundation
Emily Brown	Dave and Lori Carlson	Child of Wealth	Jenny Cooper Gaiser	Jessica and John Curran
Molly Brown	Eileen Carlson	Julie Chirinos	Charity Cooper	Sanem D'Angelo
Shannon Brown	Troy Carlson	ChiWIP	Nicole Cooper	Kristi Dahm
Sheila Brown	Amy Carlstead	Lara Cho		Amy Daigler and Aaron Andersen
Brown Sugar Caramels	Brooke Carney	Altaira Citron-Greco		
Robert Brozyna	Michael and Nancy Carr			
Nick and Katie Brunick	Diane Carroll			
George Bueno	Kelly Carroll			
Theresa Buis	Sharon Carroll			
	James Cashman			
	Elle Cassidy			

Marie Dalcamo
 Daly Bagel
 Jessica Daly
 Kathleen Danakis
 Linda and Dale
 Darmody
 David Pogruind
 Nancy Davidson
 Gail Davis
 Jake Davis
 Keith Davis
 Joyce Davis-Thompson
 Carrie and Rommel
 De La Cruz
 Sanjit De Silva
 Derek and Joeli De
 Young
 Monica Dean
 Blake DeBoer
 Krista DeBoer
 Sandy DeCaro
 Thomas DeCoursey
 Ruth and Peter Deddish
 Jennie Dede
 Deep Line Health Club
 Tabitha and Jeremy
 DeFrancisco
 Amanda Del Carlo
 Elizabeth Delaney
 Peter Dellinger
 Deloitte Services LP
 Deb DelSignore
 Delta Sigma Theta
 Sorority, Inc.
 Delta Sigma Theta,
 Inc. - Chicago Alumnae
 Chapter
 Bob Demeter and Mitzi
 McCord Demeter
 Andrew Dennis

Nidhi Desai
 Hans Detweiler
 Maria Devine Ogino
 John Dewan
 Margaret Dewar
 Barbara Di Eugenio
 Michelle Dieschbourg
 Erika Dill
 Lori and Ross Dimun
 Gabriela Dionne
 Jaime Dircksen
 Sarah Doherty
 David Donadio
 Fei Dong
 Christine Donovan and
 Adam Weems
 Steven and Audrey
 Dormanen
 Nathan Dotseth
 Gavin Dow
 Patricia Dowling
 Dr. Scholl Foundation
 Ellyn Drathring Jung
 Joe Droll
 Kenneth and Brenda
 Dryfhout
 Emily Duffy
 Marilyn Duffy-Cabana
 Duke University
 Paul Duncan
 DuPage Woodworkers
 Diana Durkin
 Stacey Durley
 Christine DuSell
 David Dworkin
 Kurt and Leah Dykstra
 Dyson
 Greg Eakins

Debra Earl
 EAST Foundation
 Haley Ebeling
 Ebert Fine Art
 Portrait Studio
 Julia Eckersley and Ian
 Morrison
 ECMC Foundation
 George and Jessica
 Economos
 Sarah Edgar
 Tamakia Edwards
 Efficio Consulting
 Kevin Eiden
 Ingrid and Olav Eiesland
 Sandrine and Scott
 Eifert
 Sharon Eiseman
 Inger Eisland-Shultz and
 Richard Schultz
 Melissa Elias
 Pamela Elliott
 Jonathan Ellis
 Diane Ellsworth
 Embrace Sexual
 Wellness, LLC.
 Katherine Emerson
 Priya Emmanuel
 Joseph Emmick
 Danielle Endter
 David Engelberg
 Benjamin Englert
 Cameron Erens
 Brittany Erickson
 John and Jane Erickson
 Lindsey Estupinan
 Euclid Avenue United
 Methodist Women
 Evangelical Free Church
 of Des Plaines

Lindsay Everest
 Fair Oaks Presbyterian
 Church
 Faith Changes Behavior
 Carrie and Edward
 Falkenhayn
 Falls Mechanical
 Insulation, Inc.
 Michelle Falstad
 Johara Farhadieh
 Nyasha Farrington
 Marissa Fasano
 Chris and Diane
 Fascione
 Stephanie Fasone
 FDC Foundation
 Katie Feekin
 Patricia Feeley and Paul
 Aeschleman
 Stephen and Rochelle
 Fernands
 Kealan Ferrell
 Caitlin and Daniel Ferri
 Festive Collective
 Aimee Feuser
 Fidelity Foundation
 Peter Fidler
 Fifth Third Foundation
 Maureen Finkell
 Niko Finnigan
 First Ascent Climbing &
 Fitness
 First Congregational
 Church of Western
 Springs
 First Rate Living Fund
 First United Church of
 Oak Park
 Gail Fisher

Lynne Fitzgerald
 Nora Fitzgerald
 Michael Flaherty
 Erin Flanagan-Kopenec
 Maribeth Flaws
 Joel Flaxman
 Julie Fleisch
 Jonah Fleisher
 Angela Fleming
 Yessica Flores
 Raquel Flores-Clemons
 Flourish Counseling &
 Wellness
 Brian Folan
 Jill Folan
 Emily Follas
 Maria Folvarska
 Forefront
 Forest Park
 Public Library
 M. Fortuna
 Anjylla Foster
 Aretha Fouch
 Eliza Fournier
 MK Fox
 Susan and Daniel Fox
 Linda and Samuel Frank
 Aimee Frankel
 Elizabeth and Seth
 Franz
 Larry and Camille Franz
 Brooke Fraser
 Fred J. Brunner
 Foundation
 Douglas Freedman

Virsie Freeman	George M. Eisenberg Foundation for Charities	Grant Healthcare Foundation	Corene Hammond	Herr Family Foundation
Stephanie Frees	Andrew Geren	Jamie Grant	Jenna and Paul Hammond	Andrea Herrera
Peter Friedman	John and Julie Gerut	Maya Grassi	Sandra Hampton	Paul and Joanna Hettinga
Friends of Sheltered Children In Kenya	Lori Gery	Cynthia Gray	Mark and Sandy Hamstra	Maggie Hettman
Friendship Baptist Church	Get Out and Learn Something Inc.	Jeff Gray	Thida Han	Camille Hicks
Brent and Judy Friesen	Gary Ghertner	Brad Grcevic	Gwen Haney	Tamara Hicks
Mary Pat Frintner	Joan Giardina	Kristin Green	Andrea Hansen	Uchenna Hicks
David Frizzie	Wendy and Dave Giardina	Greenplan Management (Oak Park Apartments)	Bruce and Kathleen Hansen	Alicia Hidalgo
Melissa Fuechtmann	Nicole Gibbard	Marjorie Greenwald	Ellen Hanson	Brian Higgins
Matt and Mina Fumagalli	Hannah Gilles	Marilyn Griffin	Robert Hanson	Bailey Hillner
David and Anne Fussichen	Deborah Gillespie and Charles Burbridge	Mary Griffin	Laura Hanssel	Hills Bank Donor Advised Gift Fund
Steve and Elene Gadowski	Lauren and Todd Gillman	Claire Griffith	Elinor Hardacre	Caitlin Hitzeman
Tom and Katherine Gaertner	Lisa Ginet and Bob Spatz	James Griffith	Beverly Hardy	Leslie Hodes
Jenna Gagen	Gina Giordano	Sandra and Eston Gross	Jessica Harmon	Jesse Hoedemaker
Judith Gaietto-Grace and Terry Grace	Nika and Nick Giuliano	Annie Grossman	Erik and Kristina Harris	Barbara Hofmaier
Matthew Gaimari	Paul Gobster and Kathleen Dickhut	Marissa Grott	Toby Harris	Lillian Hohmann
Celeste Gajda	Nancy Godinez Spencer and Daniel Spencer	Daniel Grove	Harris Theatre	Aaron Holcomb
Mandi Galluch	Janet Godsey	Genevieve Grove	Kelli Harsch	Jessica Holden
Deborah Gamble-Davis	Piyush Goel	Angela Grover and Chris Abraham	Angela Hartford	Kara Holder
Kelli Garcia	Catherine Goese	Terri and Chuck Grund	Sharon Harvey	Van Holkeboer and Linda Batchelder
Mike and Katie Garner	Arthur Goldberg and Phyllis Voosen	Melissa Guarracino	Abigail Hassett	Gail Holmberg and Henri Gillet
Tim Garner	Matthew Goldfine	Norah Guequierre	Erin Hayes	Eoin Holohan
Maria Garvy	Good Heart Work Smart Foundation	Maxine Guinn	Healthy Coin LLC	Homewood Disposal Service, Inc.
Hannah Gates	Emily Gooding	Madra Guinn Jones and Warren Jones	Healthy Communities Foundation	Jahee Hong
Catherine Gaze	Goodman Law Group Chicago	Oliver Gunanto	Jessica Heasley	Hope Community Church
Nancy and William Geary	Kristie Gorman	Martyna H	Steven Heasley	Emily Horn
Christine Geberbauer	Lauren Gorter	H2o+	Greg and Nora Hedges	Cassandra Horton
Ashley and Brian Gedvilas	Grace Lutheran Church & School	Jane Haag	Mary Heidkamp	Deena Horwitz
Jessica Gentile		Carol Hafeman	Rebecca Heidkamp	Amy and Justin Hoss
		John and Julia Haley	Randy Heinig and Laura Zumdahl	Victoria Hougham
		Libby Hall	Phoebe Helm	Joyce Houlihan
		Julia Hamel	Ronak Dana Hendry	Susan Howe
		Cathy Hamilton	Dana Hennessey	Kristin Hu
		Torri Hamilton	Jessica Henry	
		Torri Hamilton	Karyn Herndon	
		Melissa Hammer		

Hubbard Street Dance Chicago	Megan Jackson	Lisa Johnson	Dalal Katsiaficas	Ellen Kogstad and Brad Thompson
Shae Von Huerta	Michelle Jackson	Maureen Johnson	Colleen Kaufmann	Kohl Children's Museum
Andrea Hug	Jackson National Charitable Foundation	Michelle Johnson	Nicole Kazee	Stephen Koller
Patricia Hughes Cashman	Cate Jacobs	Michelle Johnson	Janet Keller	Bola Komolafe
Ruth Hughes	Erik Jacobsen	Nickyla Johnson	Ken and Sue Keller	Dr. Stephanie Konkol
Rosa Huicochea	Miriam Jacobson	Pamela Johnson	Thomas Keller Jr. and Linda Keller	Sarah Konsky
Annette Huizenga	Matthew Jacoby	Randy and Beverly Johnson	Celeste Kelley	Koval Distillery
Cate and Joe Huizenga	Christopher Jaffe	Sharon Johnson	Charlie and Brianne Kellogg	Callie Kozlak Tyler
Huntington Foundation	Adam Jaime	Talaya Johnson	Cynthia Kelly	Ressie Krabacher
Kathleen Hurley	James P. and Brenda S. Grusecki Family Foundation	Teka Johnson	Erin Kelly	Elli Krandel
Tammy and Daniel Hurley	Ebony Jamison	Jan Johnston	Paul Kelly	Ann and Evelyn Kreiter
Susan and Richard Hurt	Danielle Jamnik	Martha Johnston	Kenilworth Cookbook Club	Sharon Krohn
Joshua and Erin Hutt	Kate and Mike Jannusch	Michelle Johnston	Robert Kent and Marian Sassetti-Kent	Anna Kucaj
Mackenzi Huyser and Mark Pridgeon	Rohit Jayanandhan	Laurie Jolicoeur	Alana Kern	Amy Kuehl
Barbara and David Huyser	Christophe Jeannin	William Jones and Jennifer Evans	Matt Kerns	Terri Kuehn
Kathy, Larry and Alex Hymson	Jeni's Splendid Ice Cream	George Alexander and Genevieve Jones	Taerynn Khai	Patrick Kurtz
Debbera Hypke	Diedra Jenkins	Gregory and Joyce Jones	Stephanie Kiesling and David Layden	Tina Kuska and Mark Killian
I. A. O'Shaughnessy Foundation	Rachel Jennings	Katie Jordan	Cher Kilmer	Alan Kuska
IAMAS	Jensen Donovan	Nicole Jordan	Kimberly-Clark	Peter Labadie and Suzanne Saxman
Kai Ichikawa	Ashley Jensen	David and Donna Joss	Jeff King	Carolyn LaGioia
Lorrie Ide	Regine Jeune	Mary and Mike Joss	Kirstie King	Kevin Lamb
Rosemary Ihejirika	Peter and Kathleen Jirasek	Heidi Judy	Peter Kingma and Thomas Lambert	Jane Lamshead
Illinois Public Health Institute	Joffrey Ballet	Carla Jung	Madonna Kinne	Norman and Ilene Lamer
IMC Chicago Charitable Foundation	Julia Johannpeter	Adam Kahn	Ivan Kirchev	Jonathan and Julie Laney
Larissa Ingram	Andy and Sheree Johnson	Jessica Kahn	Edward Klinger	Mattie Langenberg
Insurance Industry Charitable Foundation	Brett Johnson	Rebekah Kalita	Susan Klinger	Heidi Langendorff
Iota Phi Lambda Society	Cliff and Amber Johnson	Carrie Kamp	Linda Klute	Dennis Langley
Kevin Irvine	Dan Johnson	Pam Kanner	Roberta and Dennis Kmiec	Mary Laraia
Beth Isaacs	Jacqueline Johnson	Kenneth and Melissa Kansa	Eric Knight	Albert Lardizabal
Jessica Iverson	Jia Johnson	Kelene Kaplan	Benjamin Ko	Alison Larkin
Constance Jackson	Lauren Johnson	Kimberly Karzen	Tom Koch	
		Kristen Kaseeska	Sandra Kofler	
		Mary Kaszuba		
		Katherine Anne Confections		

Eleanor Larman	Thomas Liao and Beverly Sha	Meredith Machon	Robin McCarthy	MIGMIR Foundation
David and Sally Larsen	Megan Licciardi	Catherine Mack	Kelly McChrystal	Mark and Rachel Mikva Rosenberg
LaSalle Street Church	Ronald and Roberta Liebmann	Christopher Mack	Jessica McClain	Clair and Sharon Miller
Kristina Laureckas	Life is Work	Todd MacMillan	Kally McConnell	Megan Miller
Tiffany Laux Keller	Carolyn Lind	Kate Maehr	McCormick Network Funds	Joe Millham
Stacey Lavelle	Erik Lindberg	Tasha Magett	McDonald's	Richard Mills
Maureen Lawler	Cara Lindell	Nell Maggio	Jen McElroy	Sarah Minkoff
Cody Leach	Nichole Linhardt	Maison Cuisine	Melani McGinnis	Lucy Minturn
Norah Leavy	Lindsay Lipes	Rich Majka	Josh McGowan	Lisa and Matthew Mitchell
Andrea Lee	Valerie and John Lipic	Bernadette Maloney	Meg McGrath	Ilaria Mocciano
Ivy and David Lee	Allison and Andrew Lipsman	Meghan Maloney	Kimberly McGuire	David Moerlein
Jarell Lee	Sara Lisy Maly	Jordan Maloni	Lindsay and Joseph McIntyre	Joseph Mole
Karyn Lee	Lloyd A. Fry Foundation	Diane Marousek	Maureen McKeough	George Molloy
Tasha Lee	Phil, Zan and Lousanne Lofgren	Tamara Marshall	Audalee and Bob McLoughlin	Momentum
Linda Lee Reiter and Richard Reiter	LeToya Lofton	Linda Marsmaker	Ezra McMillan	Tonya Mompoin
Beth and Stephen Legate	Andrena Logan	Angela Martin	Terri McNally	Jennifer Montague
Sam Leist	LogicGate	Elizabeth Martin	Susie and Bruce McNulty	MaryLee Montague
Kathiana Lejeune	Louis and Laura Logli	Katherine Martin	Cody McSellers-McCray and Corey McCray	Beatriz Montenegro
Rodrigo and Corinna Lema	Diane and Laurens Lohmann	Aimee and Christopher Marx	Molly McShane and George Schaefer	Kerry Monterey
Amy Lemieux	LaDonna Long	Alycia and Patrick Mason	McShane Construction Company	Monteverde Restaurant
Don and Joan Lennie	Looking Out Foundation	Jennifer Mason	Gregory Meadors	Donald and Julie Moore
Kelli Lenti	Genaro Lopez	Dwight Mater	Medtronic	William Moore
Christine Leonard	Katy Loster	Andrew Mathew	Eliza Melendez	John Moran
Scot Leonard	Lou Malnati's	Katie Matlin	Lizveth Mendez-Witt	Thomas and Theresa Moran
Ellen and Dan Lesser	Margaret Loughran	Sarah Maurer	Meridian	Mary Moravec
Leto Foods	Love, Charlie	Sam and Patricia Mauro	Jessica Merino	Kim and Seldon Moreland
Deborah Levine and Kim Becker	Allison Lowe-Fotos	Katherine May	Beth Messina	Morningstar
Kate Levy	Monisha Lozier	Mary May	Kristen Metz	Patrice Moroni
Trevor Levy	Janice Lucchesi	Kristin Mayhew	Peter Meyer	Alicia Morris
Dakisha Lewis	Tiffany Luo	Kelsey and Meredith Mays	Pam and Charles Meyerson	Ashley Morton
Elizabeth Lewis	Beth Lye	Kirill Mazor	Mary Michaelson	Suzanne Mosesso
Karen Lewis	Erinn Lyons	Cathy Mazurek	Angel Michelle	Mount Sinai Hospital Medical Center
Michael Li	Jim Lyons	Brian McArthur		Dana Mroczek
	Stephanie Macakanja	Michael McCalley		Lisa Mrzlack and Justin Beighley
		Deborah and Mark McCann		

David Mulder	Network It Easy, Inc.	Margaret O'Connor	Ingrid Oyen	Shearrisa Phillips
Leah Mulder	Stephanie Neubauer	Paul O'Donovan	Ozinga Bros., Inc.	Margaret Phinick
Jennifer Mulligan	Janelle Neville	John O'Keefe	Annegret Paas	Adriana Piazza
Valerie Mulrooney	New Moms	O'Meara's Irish House LLC	John and Lorraine Padour	Pickle Hill Parties
Judith Munday	Jacquelynn Newland	Carrie O'Neill	Jamie Page	Pierce Family Foundation
Scott Munson	Alexandra Newton	Kristen O'Rourke	Palmer Family Foundation	Joan and Bruce Pikas
Elizabeth Murgittroyd	Steven Niehoff	Molly O'Toole	Grace and Jim Pantelios	Cecelia Pikul and Thomas Gallagher
Kevin Murphy and Karen Brammer	Debbie and Dave Nies	Oak Park Festival Theatre	Amy Park	Sandra Pinter
Alex Murphy	Kalli Nies	Oak Park Jewelers	Shenethe Parks	Lindsay Pittman
Ann Marie Murphy	Adam and Kelly Nirenberg	Oak Park Pediatrics Ltd	Quynh Parlane	Daniel and Gail Placko
Carey Murphy	Maggie Nolan	Oak Park-River Forest Community Foundation	Talia Parlane	Katie Planek
Laura Murphy	Kristen Nomura	The Odehs	Chelsey and Adam Parrott-Sheffer	Wendy and Bob Planek
Christine Murray	Jay and Angie Norman	Ralph and Mary Oesterle	Curt Passmore	Leah Pniak
Museum of Science and Industry	Raven Norris	Kevin Ogorzalek	Tyler Pate	Kori Podszus
Music Theater Works	Northern Trust	Alison Ohlhoff	Susan and Randy Patke	Jessica Pogue
MVP Plumbing	Charitable Trust	Chi Chi Okwu	Emily Patterson	Dan Polhill
Donna Myers and Aaron Lebovitz	Northlight Theatre	Caroline Older	Tom Paulsen	Frank and Jennifer Polizzi
Jenne Myers	Peter Notier	Emily Oldfather	Meredith Paviciz	Polk Brothers Foundation
Kyle Myers	Courtney Nottage and Jillayne Rock Nottage	Cassidy Oleksy	Peak Properties, LLC	Sheila and Edward Pont
Melanie Myers	David Novak and Leslie Thornton	Wendy Oleksy	Kimberly Pecka	Amika Porwal
Donald Nadalin	Brian Noyes	Cecelia Olis	Marie and David Peckenpough	Meghan and Mark Premo-Hopkins
Janice Nadler	Nu Pi Chapter Omega	Dan Olwig and Gretchen Wiesemann Olwig	Jack Pelzer	Peter Preston
Dana and Steve Nasralla	Psi Phi Fraternity	OneDigital	Peoples Gas Community Fund	Alison Price and Doug Askham
Debra Natenshon	Jordann Nunn	Takayuki Ono	Brian Perkins	Diane Pridgeon
National Council of Jewish Women, Chicago North Shore	Nurture Life, Inc.	Victoria Onufrieff	Pete's Market	Prince Charitable Trusts
National Philanthropic Trust	NVC & Company Wealth Advisors	Origami Works Foundation	Philip and Barbara Peterson	Kristen Prinz
Navy Pier	Sharmilee Nyenhuis	Colton Ortolf	Jeff Petertil and Joan Chiolak Petertil	Yon Pritzker
Neighborly	Roger and Peggy O'Brien	Eli and Lori Osorio	John Petitto	Tashannia Profit
Andrew and April Neilsen	Leslie O'Brien Sternlicht	Marilyn Ottis	Anne Petty	Progressive Life-Giving World Cathedral
Madison Neimer	Julie O'Brochta	Our Future Reads	Anne Phillipp	
Anne and Brett Nelson	Gayle O'Carroll	Loren and Linda Oury	Nancy and Jim Phillipp	
Brie Nemeth	Kellie O'Connell	Susan Schaefer	Rebecca Phillips	
Melanie Nero	Mary O'Connell	Nina Owolabi		
	Susanne and Michael O'Connell			

Kelley Prosser	Christina Ricordati	Laurie Ruettimann	Alexandra Schiano	Suzanne and Nicholas
Protiviti	Lauren Riddell	Lucas Ruff	Bellas	Serino
Bimala Pudasaini	Gayle Riedmann	Marc and Audrey Ruffini	Janet and Kenneth	Michael Serrano
Mary and Jack Pulick	Mary and Donald Riggs	Rhonda Ruffolo	Schiffman	Leidy Severson
Maureen Pulick Meyer	Marianna Rimes Seiler	Lloyd and Linda Rugen	Elizabeth Schinazi	Monisha Shah
and William Meyer	Daniel Rinder	Monique Ruiz	Ranae Schlichting	Nirav Shah
Susan Purdie	David Rintz	RUSH University	Andrew and Kathryn	Ruth Shakil
PwC Charitable	Rosario Rios	Medical Center	Schmahl	Patty Shanks
Foundation, Inc.	Paul Ripsky	Lisa Rusticus	William and Patricia	Leah Shapiro
Jason Quiara	Rising Goddess Fitness	Julie Rzadzki-Kendall	Schmalzl	Dania Sharma
Ann Quinlin	River Forest Tennis Club	S.B. Friedman	Anne Schmidt and	Molshree Sharma
Michelle Quinones	Nicole Rivera	Development Advisors	Randy Albers	Catherine Shaw
Elizabeth and Randy	Sandra Rivera	LLC	Judith Schmitt	Chandra Shealey
Quist	Kip and Gina Robbins	Mike Sack	Patricia Schneider	Stuart Sheldon
RA Sushi	David and Susan	Linda Sackey	Jay and Sandy	Gail Shelton
Jennifer Raber	Roberts	Sadaf Gallery & Interiors	Schommer	Alice Shepherd
Frances Radencic	Rachel Roberts	Peter Sakash	Cathy Schornshein	Quinn Shepherd
Radio Flyer	Sarah Robins	Salesforce.com	Ann Schreiner and Amy	Suzanne Shepherd
Stormie Radtke	Nadia Robinson	Angelia Salgado	Starin	Thomas Shepherd
Johanna Raimond	Naomi Robinson	Sarah Sallen	Jodie Schroeder	Judy Sherr
Ms. Pinky Raina	Noemi Robinson	Lesley Samuel	Joanna Schubkegel	Sharon Sherrard
Ruth Ranks	Mary Rodino	Charlene Sanders	Christie Schuessler	Tara Shewchuk
Abigail Rasweiler	Bruce Rodman	Christine Sanders	Mary Schultz	Kelly Shillair
Donald Rasweiler	Nelson Rodriguez Rivas	Victoria Sandler	Eileen Schwaba	Shiseido
Alise Rath	Pamela Roesch	Deidra Sanford	Robin and Stuart	Mabel Shiu
Sheena and Nicholas	Keisha Rogers	Martina Sangin	Schwadron	Sarah Shizas
Rayford	Rebecca Rokos	Lorrie Santella	Patricia Schwandt	Carla Short
Katherine Reap	Vikki Rompala	Nicholas Saracco	Donna Schwarz	Ana Showalter
Sarah Reddin	Ben and Carmen	Sauganash Community	Sumera Seedat	Kim and Dale Showalter
Lisa Reed	Rosado	Church	Kristen and Steve	Bryn Siberski
Michelle Reedy	Yali and Jose Rosario	Christopher Savage	Seeger	Richard and Shannon
Doug and Lynn Rees	Emily Rosenbaum	Daniel Savage	Beth and Chuck Seen	Siberski
Stephanie Reis	Mike Rosenholtz	Candace Say	Karen Seimetz	Sidley Austin
Republic Bank	Angellic Ross	Margaret Scalzo	Daniel Sell and Lynell	Lindsay Siebert
RH & JR Larson Family	Meg Ross	Kimberly Schafer	Oyen	Neal Siegel
Foundation	Mironda Ross	Max and Diane	Liz and Alex Seminary	Lacey Sikora
Whitney Ribbens	Cecilia Roth	Schanzenbach	Tony and Karen	Marva Simmons
	Rebecca Roussell	John and Susan	Seminary	Simply Organized
	Andrea Rudd	Schaper	Stacy and Timothy	Susan Sitter
			Senechalle	
			Liz Senn	

Judith Skerchock
 Skydeck Chicago
 Robbie Slager
 Safet Slinic
 Patricia Sloan
 Scott Sloan
 Tricia Slusher
 Harry Smelser
 Mairita Smiltars
 Andrya Smith
 Danielle Smith
 Dr. Shawn Smith
 Heidi Smith
 Michelle Smith
 Shaquitta Smith
 Stephen and Jill Smith
 Smith, Gambrell &
 Russell
 Sarvesh Soi
 Andrea Solow
 Terri Soni
 Adrienne Soong
 Doug and Martha
 Sorensen
 Rachel Sotelo
 Art Soudek
 Joseph Sovcik
 Mary Lib and Dennis
 Sovick
 Spaulding Ridge
 Spencer Foundation
 Donnell Spencer
 Maureen Spielman
 Kelly Spowage
 Jan and Avery Spunt
 Sarah Spunt
 St. John's Lutheran
 Church
 St. Louis Community
 Foundation

Brigit Stacey
 Matt Stagner
 Sheila Stahl Butler
 Oliver Stahl
 Stefani Stallard
 Stand Together
 Foundation
 James Stanley
 Sarah Stanton
 Starbucks Foundation:
 Neighborhood Grants
 Fund
 Lawrence Stark
 Patricia Staszak
 State of Play Hospitality
 Jessica Stefanski
 Kelly Stein
 Jordan and Lee Stellakis
 Julene Stellato
 Jessica Stepanski
 Michele Stern
 Julia Stevenson
 Eva Stewart
 Natasha Stewart
 Judith Stockdale and
 Jonathan Boyer
 Caitlin Stoeckley
 Jessica Stoffer
 Sabrina Stroud
 Meghan and Doug
 Strubel
 Bruce Stumbris
 Sugar Beet Food Co-op
 Allison Sullivan
 James and Mollie
 Sullivan
 Eva Sullivan-Knoff
 Carrie Summy
 Ed and Pat Sutarik

Danielle Sutker
 Suzy Quilts
 Carol Swanson
 Ranya Sweis Faasse and
 Mark Faasse
 Mary Swiontoniowski
 System Six Bookkeeping
 Jamie Szafranski
 George Tadros
 Takeout 25
 Elizabeth Tanaka
 Kelly Tanaka Weisz and
 Matthew Weisz
 Karen Tang
 Tammy Taphorn
 Target
 Conni Tasiopoulos
 Danielle Tasiopoulos
 Tina Tassone
 Latoya Tatum Bynoe
 and Kevin Bynoe
 Georgia Tauscher
 Michelle Taylor
 Rhona Taylor
 Todd Temperly
 Ten Thousand Villages
 Mark and Joanne Ter
 Molen
 Sagar Thakkar
 The Blowitz-Ridgeway
 Foundation
 The Cheesecake
 Factory
 The Community
 Foundation of
 Macon County
 The Field Museum
 The Giving Back
 Fund, Inc.

The Harry and Jeanette
 Weinberg Foundation
 The Jay & Rose Phillips
 Family Foundation of
 Minnesota
 The Joyce Foundation
 The Judy Family
 Foundation
 The Langham, Chicago
 The Lazy Volunteer
 The Owens Foundation
 The Prinz Law Firm
 The Progressive
 Insurance Foundation
 The Tuscan Resort
 Michelle Thetford
 Lois and Brian Thiessen
 Love
 Auresa Thomas
 Mary Thomason
 Monica Thorns
 Ann Thornton
 Pat and Liz Thornton
 Thrivent
 TimeLine Theatre
 Company
 TJX Foundation
 Mustafa Tolga Ercan
 Emmett and Deborah
 Tomai
 Sarah Toney
 Topfer Family
 Foundation
 Tutto's Market
 Amy Trager
 Travelzoo
 Joyce Trimuel
 Trinity Christian College
 Keith Tristano

Triton College Cernan
 Earth and Space Center
 Joleen Tschaikovsky
 TTX Company
 Tullman Family Office
 John Tuohy
 Chris and Nicole Turner
 Tyndale House
 Foundation
 U.S. Probation
 U.S. Soccer Federation
 Susan Uhlarik
 Gordon Umbarger
 United Lutheran Church
 Unity Temple
 Unitarian Universalist
 Congregation
 University of Illinois
 Urbana-Champaign
 Sanjeet Uppal
 Danielle Upton
 Heather and Erik Urban
 Lauren Usaitis
 Nancy and Donald
 Vahldick
 Rafael Valadez
 George Valaika
 Dave and Joya
 Van Der Laan
 Nguyen Van Hai
 Katherine Van Meurs
 Jane Van Stedum
 Shawna Van Trease and
 Diane Bell
 Lois and John Vander
 Laan

Stephanie and Nicholas Vanderschie	Caitlin Waggoner	Deborah Wess	Wines for Humanity	Xiao Xu
Kari and Scott VanderVeen	Denise Waits	West Suburban Philanthropic Network	Jani Wink	Pooja Yadav
David and Anne Vanderweele	Bob Walicki	Western Springs Christian Reformed Church	Tom Winkelman and Erin Cleary	Nura Yanaki
John and Barbara VanScoyoc	Austin Walker	Uwe Westphal	Audra Winn Leahy and Sean Leahy	Lisa Yanello
Lidia Varesco Racoma	Joanne and David Walker	Wheaton Franciscan Sisters	Joycelyn Winnecke	Virginia Yarrow
Fernando Vargas	Karen Walker	Lakecia Whipper	Ronald and Anna Winters	Alyssa Yokota-Byron
Francisco Velasco	Laura Walker	Anna White	Dennis Wise	Margaret Young
Rene Velasco	Nicole and Roy Walker	Beth White	Katie and Matt Wise	R. S. Young
Alison Ver Halen	Liam Walsh	Lisa White	Sarah Wittenborn	Sara Yount
Pamela Vernardo	Michael Walsh	Cheri Whitson	Joselyn Wojtalewicz	Joseph Zambrano
Scott Verschoor	Kurt Walther	Colleen and Grace Whittingham	Sarah and Chuck Wolf	Tom Zanoni
Edna Vidauree	Weien Wang	Robert and Kathy Wiesemann	Brianna Wolfson	Brian Zavalkoff
Andrew Vidikan	Leslie Warda	Carla Wiley	Jessica and Chris Wollmuth	Cindy Zeivel
Christine Villacorta	Deborah Warden	Timothy and Susan Wiley	Wonder Works Children's Museum	Amanda and Jason Zenger
Courtney Villari	Christy Warren	Courtney Wilk-Mandel	Anne Wong	John Ziegler and Aasta Heasley
Lisa Vinh	Tommy Wasilowski	Hannah Willage	Erik Wood and Lindsey Kurdi Wood	Jim and Mary Ziegler
Nina Vinik	Shannon and Dan Wasiolek	William G. McGowan Charitable Fund	Grace Wood	Katherine Ziegler
Jane Vishneski	Bill Waterbury	Aryell Williams	Sarah Woodruff	Liz Ziehl
Vivo Foundation	Angela Watson	Craig and Bette Williams	Cynthia Woods Weinand	Caren Zielke
Beth and Peter Vlerick	Robert Webster	Ruby Williams	Working Bikes	Mark Zimet
VNA Foundation	Jeff and Rebekah Weglarz	Sidney Williams	Sophia Worobec	Andrea Zimmerman
Kenneth and Karen Volpert	Megan Weidenhammer	Suzanne Williams	Robert Wozniak	Michael Zmora
Jennifer Von Drehle	Simone Weil	Audrey Williams-Lee and Byron Lee	Kendra and Mark Wright	Ben and Jessica Zumdahl
Joan Voskes	Jennifer Weinacht	Erin and Kyle Wilson	Stacy Wright	Linda Zumdahl
Steven Vryhof	Ayal Weiner-Kaplow	English Wilson	WSMC Family Medicine Residency Faculty	Lyle and Amy Zumdahl
W.P. & H.B. White Foundation	Leslie Weiss	Kelly Wilson	Eric Wu	Joanna Zumhagen
	Sam Weisz			
	Maureen Weldon			
	Wells Fargo Foundation			
	Andrew Wells			
	Mary Jane Welter			

Every effort was made to correctly recognize our donors. If your name needs to be updated, please reach out to Lauren Callaghan at lcallaghan@newmoms.org.

FY23 New Moms **BOARD OF DIRECTORS**



Deborah Gillespie
Chair
DGCB Group



Jason Quiara
Vice Chair
ConnectED



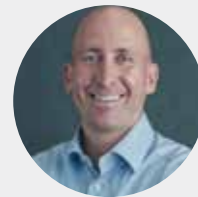
Nancy Godinez
Spencer, **Treasurer**
*Huntington
National Bank*



Latoya Tatum
Bynoe
Secretary
Clario



Christy Brown
Medtronic



Nicholas Brunick
*Applegate &
Thorne-Thomsen*



Gia Colunga
*Freeborn &
Peters LLP*



Gail Davis
*Chicago Teachers'
Pension Fund*



Robert Demeter
PwC



Lori Dimun
*Harris Theater for
Music and Dance*



Christine
Donovan
Northern Trust



Angela Grover
Metopio



Madra Guinn-
Jones
*American Academy
of Pediatrics*



Stephanie Kiesling
*National Runaway
SafeLine*



Jarell Lee
KIPP Chicago



Dakisha Lewis
*Advocate Aurora
Health at Advocate
Trinity Hospital*



Cody McSellers-
McCray
*Centene
Corporation*



Eliza Melendez
Protiviti



Jordann Nunn
*McDonald's
Corporation*



Kristen Prinz
The Prinz Law Firm



Pinky Raina
*U.S. Soccer
Federation*



David Rintz
*McShane Construction
Company*



Kelly Tanaka
KPMG US



Shannon Wasiolek
Google

New Moms **EXECUTIVE LEADERSHIP TEAM**



Laura Zumdahl
President & CEO



Melanie Garrett
Chief Program Officer



Lizveth Mendez-Witt
Chief Financial Officer



Jenna Hammond
Chief Development Officer



Pamela Bozeman
Chief Operating Officer



Leadership Team

Gabrielle Caverl-McNeal
Senior Director of Workforce Development

Janet Keller
Senior Director of Finance

Ellen Kogstad
Founder, Director of Spiritual Formation

Katie Wise
Director of Family Support, Chicago

Anne Schulz
Senior Director of Performance Management

Gail Shelton
Director of Family Support, Oak Park

Bonnie Andorka
Director of Individual Giving

Mallory Tesauro
Director of Human Resources

Sarah-Jayne Ashenhurst
Social Enterprise Director

Dana Emanuel
Senior Director of Learning and Innovation

Nekeisha Battie
Director of Housing

Aasta Ziegler
Director of Clinical Services

FY23 New Moms **ASSOCIATE BOARD**

Anjylla Foster, Ph.D.,
Membership Chair

Monica Alvarado
de Olis

Molly Barkett

Deanna Barnes

Carmen Beilman

Morgan Benson, M.S.

London Black, MSW

Melissa Boduch

Venus Brady

Cherise Brown

Molly Cheatem

Kathleen Crowder

Megan Dawson

Mindy Dillon

Elizabeth Franz

Jenna Glimp

Janet Godsey

Siobhan Goree, QSSP

Toni Grimes

Nubia Henderson

Natalie Hiebert,
MSW, LSW

Jessica Holden,
MSHR, SPHR

Cate Jamison
Huizenga

Rachael Kiphart

Kelly Kobylanski

Nell Maggio

Mary Michaelson

Yvette Needham

Maggie Nolan, CPA

David Novak, Ph.D.

Victoria Onufrieff

Carey Palmer

Chanel Phillips, Ph.D.

Meghan Premo-
Hopkins

Stephanie Reis

Sarah Robins

Elizabeth Salmonowicz

Christie Schuessler

Mary Schultz

Mabel Shiu

Lisa Taylor

Roxie Williams

Tonja Williams

Makeisha Williams-
Thompson

Shirley Wooten
Steedley

Kendra Wright

John Ziegler

Ashley Zimmermann



NEW MOMS

newmoms.org

773.252.3253

contact@newmoms.org



Chicago

5317 W. Chicago Ave.
Chicago, IL 60651

Oak Park

206 Chicago Ave.
Oak Park, IL 60302

Bright Endeavors

627 N. Albany Ave.
Chicago, IL 60612

Design: Lidia Varesco Design

Photography: Anjali Pinto, MHCooper Photography, and Jaclyn Rivas